

Vestax PF-2000 PRO KIT

PITCH FADER KIT FOR PDX-2000 SERIES

INSTALLATION MANUAL

Head Office

1-18-6 Wakabayashi, Setagaya-ku, Tokyo 154-0023 Japan
Web: <http://www.vestax.com/>

Vestax Global Support
csg@vestax.jp

Vestax Europe Support
support@vestax.net

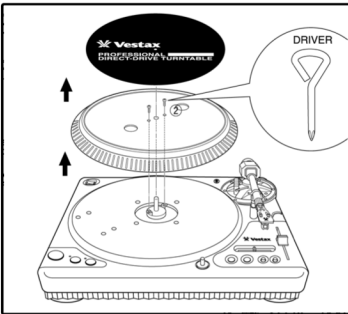
Thank you for purchasing the Vestax Replacement Fader unit new Long Life PG version.
Please read this install manual carefully with the **PDX-2000** owner's manual before installation.

ACCESSORIES

Please check all items listed below are included.
FINE PITCH FADER FOR PDX-2000 Series

●HOW TO REMOVE PITCH FADER UNIT

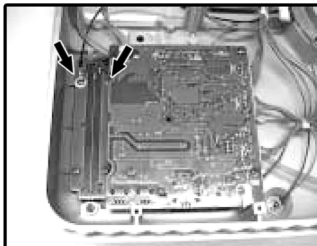
- ① Remove the turntable plate, open the PDX chassis and remove the whole front panel.



<fig.a>

- ② Carefully disconnect the multi-cable JST P2/DPS/Mollex* connector and ground wire from the PCB board fine pitch fader unit.

*) NOTICE: older versions PDX use type Mollex or DPS connectors.

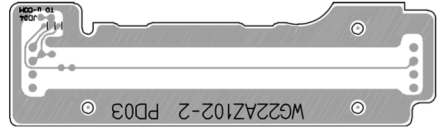


<fig.b>

- ② Remove the entire PCB board with fine pitch fader unit.



<fig.c>



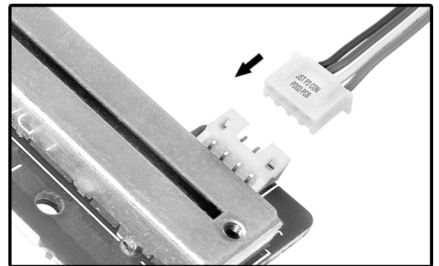
- ③ Install the PCB board with new fine pitch fader unit back into the PDX chassis.



<fig.d>

※Please take care not to put pressure on the wires.

- ⑥ Plug PCB board to the multi-cable connector. Multi-cable connector JST P2 must be inserted correctly and cables must not be twisted or crossed.





<fig.e>

- ⑦ Check all connections and make mounting chassis front plate back.

<NOTE> Please take care that the wires are not trapped between the removable panel and the case, or that the wires are trapped otherwise as the wires may be pinched, or snap.

- ⑧ Attach the knobs for fine pitch fader.

SAFETY WARNING

	CAUTION RISK OF ELECTRIC SHOCK DO NOT OPEN	
BEFORE REPLACING THIS PART DISCONNECT THE DEVICE FROM THE POWER SUPPLY REFER SERVICING TO QUALIFIED SERVICE PERSONNEL		



The lightning flash with arrowhead symbol, within an equilateral triangle, is intended to alert the user to the presence of uninsulated "dangerous voltage" within the product's enclosure that may be of sufficient magnitude to constitute a risk of electric shock to persons.



The exclamation point within an equilateral triangle is intended to alert the user to the presence of important operating and maintenance (servicing) instructions in the literature accompanying the appliance.

TO REDUCE THE RISK OF FIRE OR ELECTRIC SHOCK, DO NOT EXPOSE THIS APPLIANCE TO RAIN OR MOISTURE.

NOTE

This equipment has been tested and found to comply with the limits for a Class B digital device, pursuant to Part 15 of the FCC Rules. These limits are designed to provide reasonable protection against harmful interference in a residential installation. This equipment generates, uses and can radiate radio frequency energy and, if not installed and used in accordance with the instructions, may cause harmful interference to radio communications. However, there is no guarantee that interference will not occur in a particular installation. If this equipment does cause harmful interference to radio or television reception, which can be determined by turning the equipment off and on, the user is encouraged to try to correct the interference by one or more of the following measures.

- Reorient or relocate the receiving antenna.
- Increase the separation between the equipment and receiver.
- Connect the equipment into an outlet on a circuit different from that to which the receiver is connected.
- Consult the dealer or an experienced radio/TV technician for help.

NOTE

Changes or modifications may cause this unit to fail to comply with Part 15 of the FCC Rules and may void the user's authority to operate the equipment.