



3BAND FREQUENCY DIVIDING GEAR

DFG-X2

OWNER'S MANUAL

Vestax Corporation

1-18-6 Wakabayashi Setagaya-ku Tokyo 154-0023 Japan.

Phone 03-3412-7011, Fax 03-3412-7013

Web : www.vestax.jp

Vestax (Europe) Ltd.

Unit 5 Riverway Industrial Park Alton Hampshire GU34 2QL England, U.K.

Phone (0)1420-83000, Fax (0)1420-80040

Web : www.vestax.co.uk

Vestax America (west Coast)

15320 Valley View Road Unit 9 La Mirada, CA 90638

Phone (562)623-9881, Fax (562)483-7304

Web : www.vestaxdj.com

Vestax Technical Center of America

8489 W.Third Street Ste.1044 Low Angeles CA 90048

Phone 323-801-2111 Fax 323-801-2112

Vestax Europe Technical Support

Rheinstr.213 D-53332 Bornheim Germany

Phone 49(0)2222-95-23-72 Fax 49(0)2222-95-23-74

CONGRATULATIONS!

Thank you for purchasing the VESTAX DGE-X2 - GRAPHIC ELIMINATOR - .
Please read this owner's manual carefully before you start to use your
DGE-X2 in order to fully understand all of the special features.

CONTENTS

CAUTION	2
IMPORTANT SAFEGUARDS	3
FEATURES	4
FUNCTIONS	4
CONNECTION DIAGRAM	6
SPECIFICATIONS	7
WARRANTY	7



CAUTION



RISK OF ELECTRIC SHOCK DO NOT OPEN

CAUTION : TO REDUCE THE RISK OF ELECTRIC SHOCK
DO NOT REMOVE COVER (OR BACK)
NO USER-SERVICEABLE PARTS INSIDE
REFER SERVICING TO QUALIFIED SERVICE PERSONNEL



The lightning flash with arrowhead symbol, within an equilateral triangle, is intended to alert the user to the presence of uninsulated "dangerous voltage" within the product's enclosure that may be of sufficient magnitude to constitute a risk of electric shock to persons.



The exclamation point within an equilateral triangle is intended to alert the user to the presence of important operating and maintenance (servicing) instructions in the literature accompanying the appliance.

TO REDUCE THE RISK OF FIRE OR ELECTRIC SHOCK, DO NOT
EXPOSE THIS APPLIANCE TO RAIN OR MOISTURE.

CAUTION : TO PREVENT ELECTRIC SHOCK, MATCH BLADE OF
PLUG TO WIDE SLOT, FULLY INSERT

ATTENTION : POUR EVITER LES CHOCS ELECTRIQUES,
INTRODUIRE LA LAME LA PLUS LARGE DE LA
FICHE DANS LA BORNE CORRESPONDANTE DE LA
PRISE ET POUSSER JUSQU' AU FOND

IMPORTANT SAFEGUARDS

READ BEFORE OPERATING EQUIPMENT

This product was designed and manufactured to meet strict quality and safety standards. There are, however, some installation and operation precautions which you should be particularly aware of.

1. **Read Instructions**-All the safety and operating instructions should be read before the appliance is operated.
2. **Retain Instructions**-The safety and operating instructions should be retained for future reference.
3. **Heed Warnings**-All warnings on the appliance and in the operating instructions should be adhered to.
4. **Follow Instructions**-All operating and use instructions should be followed.
5. **Cleaning**-Unplug this product from the wall outlet before cleaning. Do not use liquid cleaners or aerosol cleaners. Use a damp cloth for cleaning.
6. **Attachments**-Do not use attachments not recommended by the product manufacturer as they may cause hazards.
7. **Water and Moisture**-Do not use this product near water-for example, near a bath tub, wash bowl, kitchen sink, or laundry tub, in wet basement, or near a swimming pool, and the like.
8. **Accessories**-Do not place this product on an unstable surface. The product may fall, causing serious injury to child or adult, and serious damage to the appliance. Use only with a surface, or table recommended by the manufacturer, or sold with product. Any mounting of the appliance should follow the manufacturer's instructions, and should use a mounting accessory recommended by manufacturer.
9. **Ventilation**-Slots and openings in the cabinet are provided for ventilation, to ensure reliable operation of the product and to protect it from overheating, and these openings must not be blocked or covered. The unit should never be placed on an uneven surface(eg. bed) during operation. This product should never be placed near or over a radiator or heat register. This product should not be placed in a built-in installation such as a bookcase or rack unless proper ventilation is provided or the manufacturer's instructions have been adhered to.
10. **Power sources**-This product should be operated only from the type of power source indicated on the marking label. If you are not sure of the type of power supply to your home, consult your appliance dealer or local power company.
11. **Grounding or Polarization**-This product is equipped with a polarized alternating-current line plug (a plug having one blade wider than the other). This plug will fit into the power outlet only one way. This is safety feature. If you are unable to insert the plug fully into the outlet, try reversing the plug. If this should still fail to fit, contact your electrician to replace your obsolete outlet. Do not defeat the safety purpose of the polarized plug.
12. **Power-Cord Protection**-Power supply cords should be routed so that they are not likely to be walked on or squashed by items placed upon or against them, paying particular attention to cords at plugs, convenience receptacles, and the point where they exit from the appliance.
13. **Protective Attachment Plug**-The appliance is equipped with an attachment plug having overload protection. This is a safety feature. See Instruction Manual for replacement or resetting of protective device. If replacement of the plug is required, be sure the service technician has used a replacement plug specified by the original plug.
14. **Lightning**-For added protection of this product during a lightning storm, or when it is left unattended and unused for long periods of time, unplug it from the wall outlet. This will prevent damage to the product due to lightning and power-line surges.
15. **Overloading**-Do not overload wall outlets and extension cords as this can result in a risk of fire or electric shock.
16. **Object and Liquid Entry**-Never push objects of any kind into this product through openings as they may touch dangerous voltage points or short-out parts that could result in a fire or electric shock. Never spill liquid of any kind on the product.
17. **Servicing**-Do not attempt to service product yourself as opening or removing covers may expose you to dangerous voltage or other hazards. Refer all servicing to qualified personnel.
18. **Damage Requiring Service**-Unplug this product from the wall outlet and refer servicing to qualified service personnel under the following conditions:
 - a. When the power-supply cord or plug is damage.
 - b. If liquid has been spilled or objects have fallen into the product.
 - c. If the product has been exposed to rain or water.
 - d. If the product does not operate normally by following the operating instructions. Adjust only those controls that are covered by the operating instructions as an improper adjustment of other, controls may result in damage and will often require extensive work by a qualified technician to restore the product to its normal operation.
 - e. If the product has been dropped or cabinet has been damaged.
 - f. When the product exhibits a distinct change in performance-this indicates need for service.

19. Replacement Parts-When replacement parts are required, be sure the service technician has used replacement parts specified by the manufacturer or which have the same characteristics as the original parts. Unauthorized substitutions may result in fire, electric shock or other hazards.

20. Safety Check-Upon completion of any service or repairs to this product, ask the service technician to perform safety checks to determine that the product is in proper operating condition.

21. Carts and Stands-The appliance should be used only with a cart stand that is recommended by the manufacturer.

22. An appliance and cart combination should be moved with care. Quick stops, excessive force, and uneven surfaces may cause the appliance and cart combination to overturn.

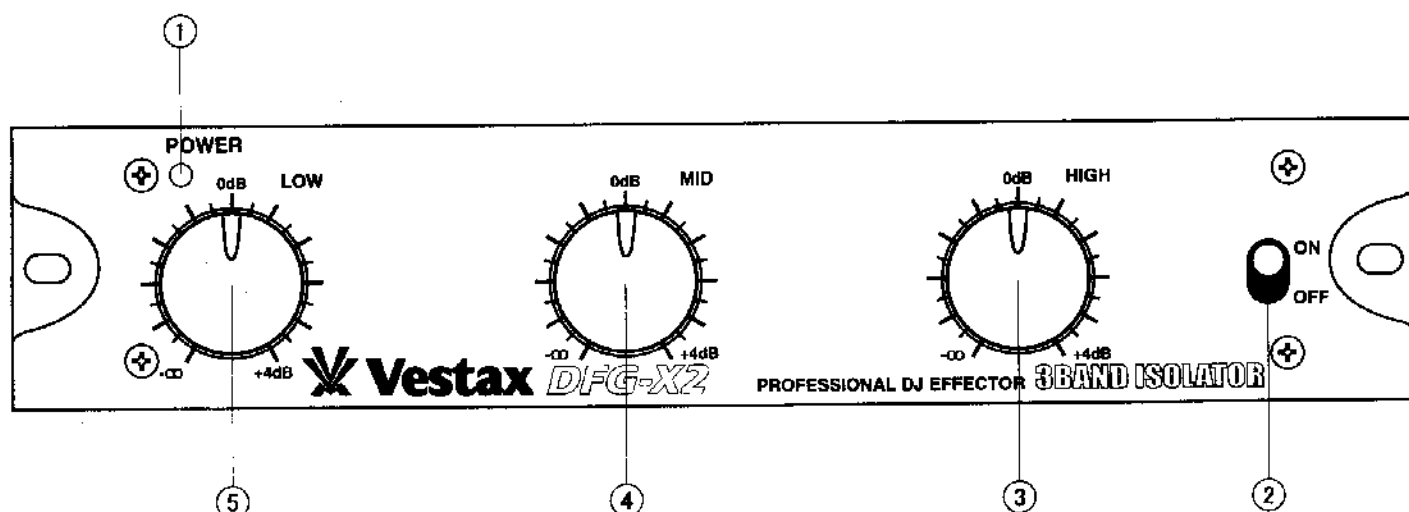


FEATURES

- DFG-X2 can be used to divide a music source into 3 bands (Hi, Mid, Low frequency), for the creative professional DJ. DFG-X2 can control sound levels of the same frequencies from $-\infty$ dB to +4dB.
- The size of the DFG-X2 is a half rack size.
- Due to the inbuilt phono equalizer amplifier the DFG-X2 can accept input directly from turntables.

FUNCTIONS

FRONT PANEL



① **POWER INDICATOR**

Shows when power is on.

② **EFFECT ON/OFF SWITCH**

When this switch is on, a full range signal is output regardless of the position of any controls.

③ **HI VOLUME**

Allows boost and cut of the treble range. Sound volume will increase when the knob is turned clockwise. When set at 12 o'clock position the output volume is the same as when in BYPASS mode. Is used to emphasize the sound of the cymbals or high hats for example.

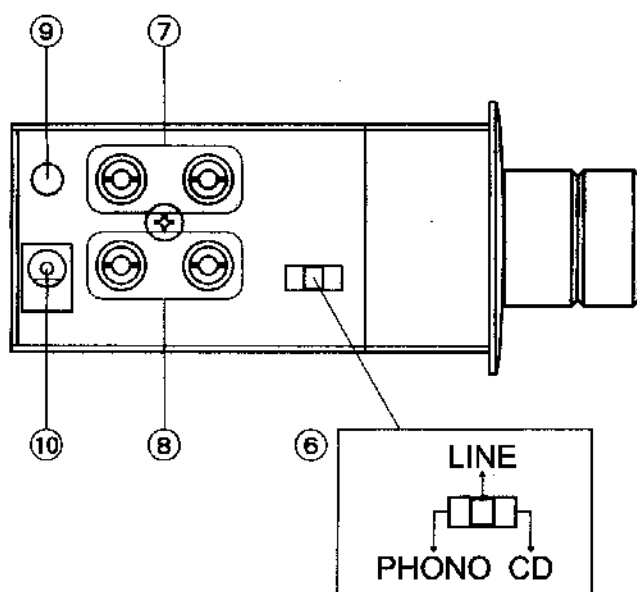
④ **MID VOLUME**

Allows boost and cut of the middle range. Sound volume will increase when the knob is turned clockwise. When set at 12 o'clock position the output volume is the same as when in BYPASS mode. Can be used to cut vocal and melody from the source.

⑤ **LOW VOLUME**

Allows boost and cut of the bass range. Sound volume will increase when the knob is turned clockwise. When set at 12 o'clock position the output volume is the same as when in BYPASS mode. Can be used to create the effects of an acapella.

SIDE PANEL



⑥ **INPUT SELECT SWITCH**

Select the input level (PHONO/LINE/CD). PHONO INPUT : -46dBv / LINE INPUT : -10dBv / CD INPUT : +4dBv.

⑦ **OUTPUT**

Stereo RCA unbalance Jack.

⑧ **INPUT**

Stereo RCA unbalance Jack. (PHONO -46dBv/LINE -10dBv /CD +4dBv) Please set Input Switch to Phono Side when connecting a turntable.

⑨ **GND**

Connect this terminal to the ground lead of the turntable. This helps to reduce noise, and hum.

⑩ **DC INPUT**

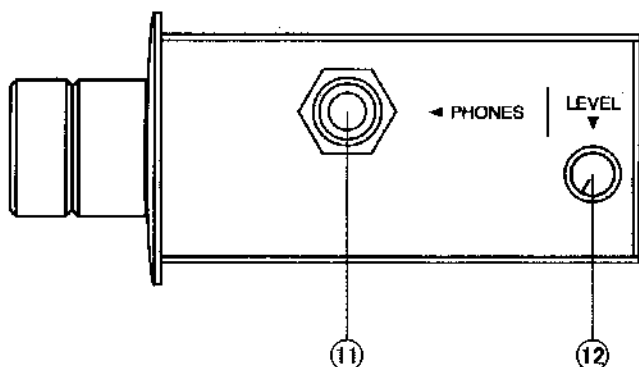
Connect Power Supply here (use Vestax DC-15STM or DC-15A)

⑪ **HEADPHONES JACK** [Standard $\phi 6.3$]

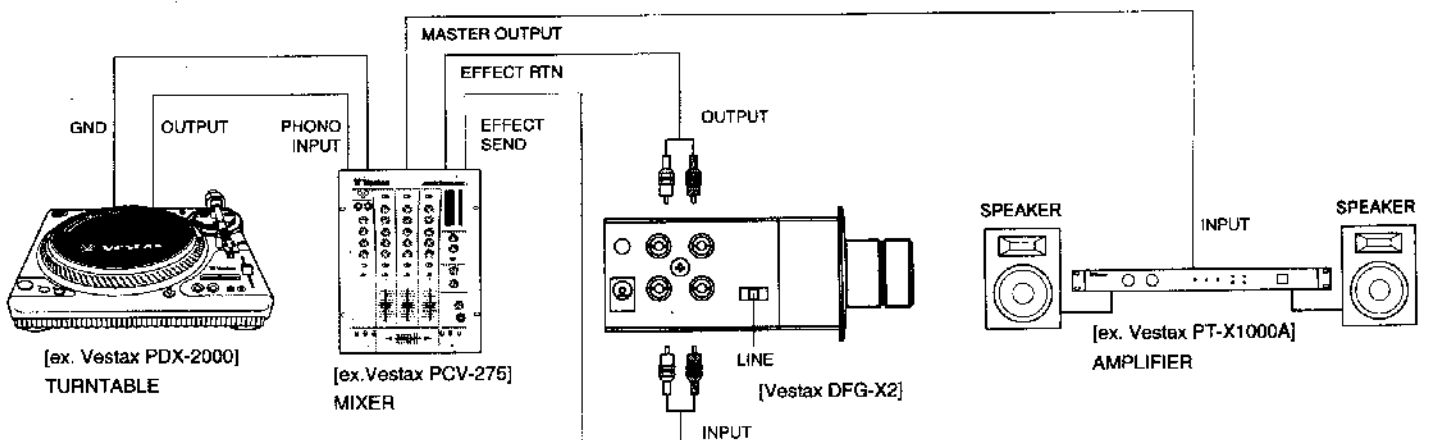
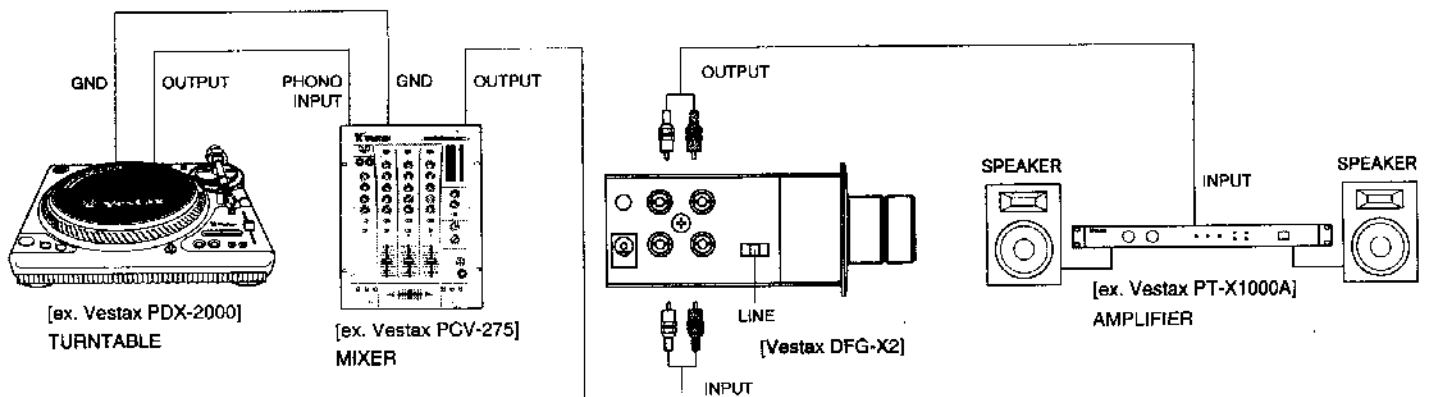
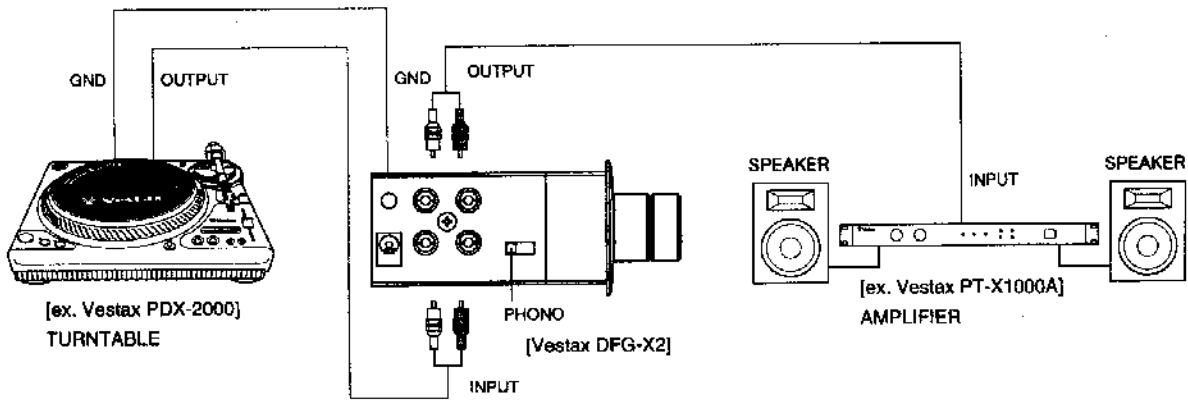
Connect headphones with a standard 1/4" stereo plug.

⑫ **HEADPHONES VOLUME**

Adjust the level of input signal.



CONNECTION DIAGRAM



SPECIFICATIONS

- NOMINAL INPUT LEVEL : PHONO -46dB
: LINE -10dB
: CD +4dB
- NOMINAL OUTPUT LEVEL : 0dB
- S/N RATIO : OVER 60dB
- CONTROL : 3 BAND FILTER 24dB/oct.
- POWER SUPPLY : DC-15V, 100~500mA
- DEMENSIONS : 218 × 44 × 103mm
- WEIGHT : 620g

WARRANTY

The warranty might vary from country to country. Each distributor has their own warranty system in accordance with the country or state regulations or laws. VESTAX observes the manufacturing country's regulation.



Vestax Corporation 1-18-6 Wakabayashi, Setagaya-ku, Tokyo 154-0023 Japan
Telephone : 81-(0)3-3412-7011 Fax : 81-(0)3-3412-7013. www.vestax.jp

***This is to certify that the product subsequently referred to
was designed and manufactured in conformity with the
following EC directives;
89/336/EEC (EMC)
73/23/EEC (LVD)***

Model type : Professional DJ Effector

Model Description : Half rack size / DJ Effector series

Model Number : DFG-X2

Applicable Standards : EN55013:1990+A12:1994+A13:1996 Limits and methods of measurement of radio disturbance characteristics of broadcast receivers and associated equipment (including amendments A12:1994 and A13:1996) (CISPR13:1975/Amdt1:1983, modified)
EN50082-1:1997 Electromagnetic compatibility-Generic immunity standard Part1:Residential, commercial and light industry

Date : Wednesday, December 19, 2001

Place of Issue : Vestax Corporation, 1-18-6 Wakabayashi, Setagaya-ku,
Tokyo 154-0023 Japan

**Manufacturers Authorized
Signature :**

Function of Signatory :

Masaaki Shiomi

Director